

# Kit Price Catalogue

## 2023

Solar Engineering in more than 69 Countries

- ✓ 20 Year Panel Warranty
- ✓ European Engineering
- ✓ Full Kits Supplied
- ✓ Managed Panel Stagnation
- ✓ High Quality
- ✓ 50 Years of Solar Engineering





Call: 0844 850 8508



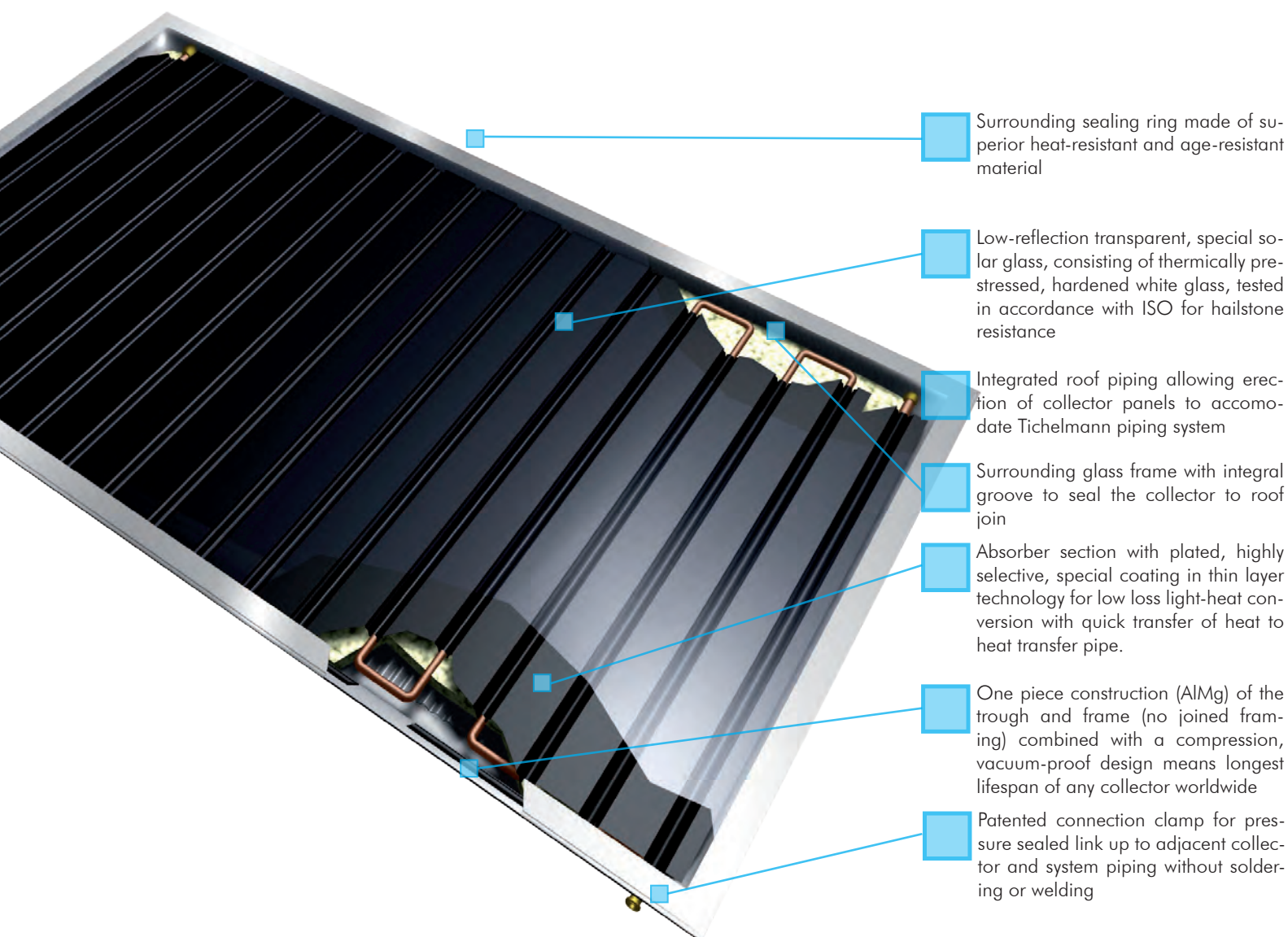
Email: [enquiries@hotsolarwater.com](mailto:enquiries@hotsolarwater.com)

World beating 20 Year warranty • Peak performance 1444 W per panel • Zero maintenance

# Introduction

This Thermosolar panel is one of the most versatile panels on the market and carries with it an uncompromising 20 Year manufacturer warranty, giving your customer the assurance that they are investing in a safe and reliable long term energy system. The Thermosolar panel can scale from 1 panel systems to matrixes of 10 panel rows; the full spectrum of domestic to commercial projects can be covered. At the heart of the Thermosolar panel is an underlying characteristic, Reliability. The Thermosolar panels are designed for a maximum stagnation temperature of 190°C. This stops the system over heating and eliminates the need for a heat dump.

The Thermosolar solar panel is available in silver and brown frames.



Thermosolar Ltd.  
Unit 7, 179 Whiteladies Road, Clifton, Bristol. BS8 2AG



Call: 0844 850 8508

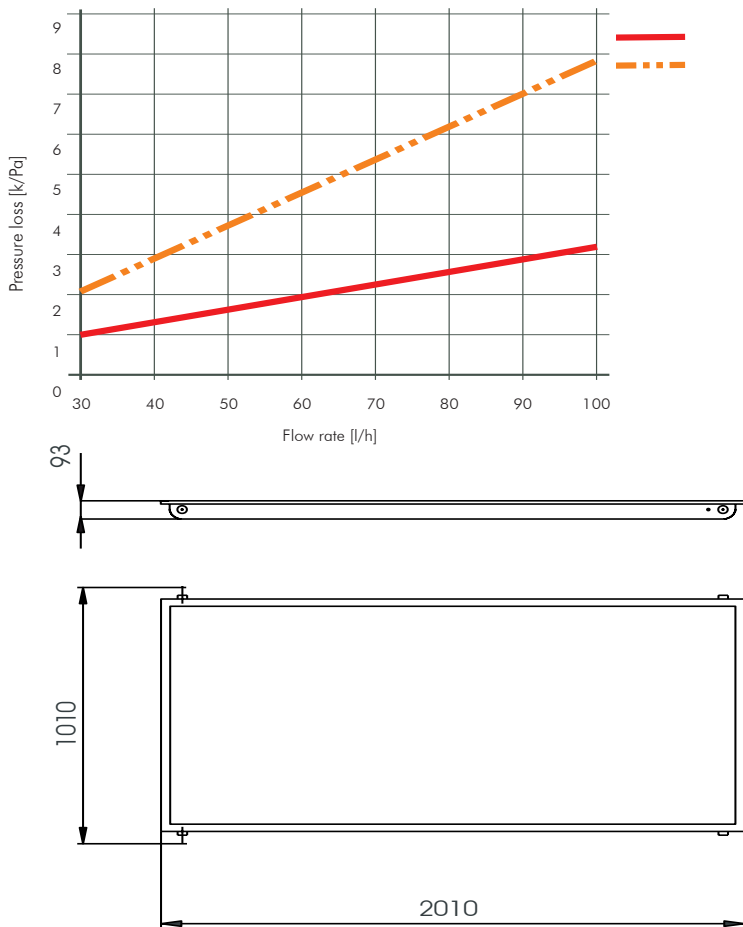


Email: [enquiries@hotsolarwater.com](mailto:enquiries@hotsolarwater.com)

World beating 20 Year warranty • Peak performance 1444 W per panel • Zero maintenance

## Pressure drop:

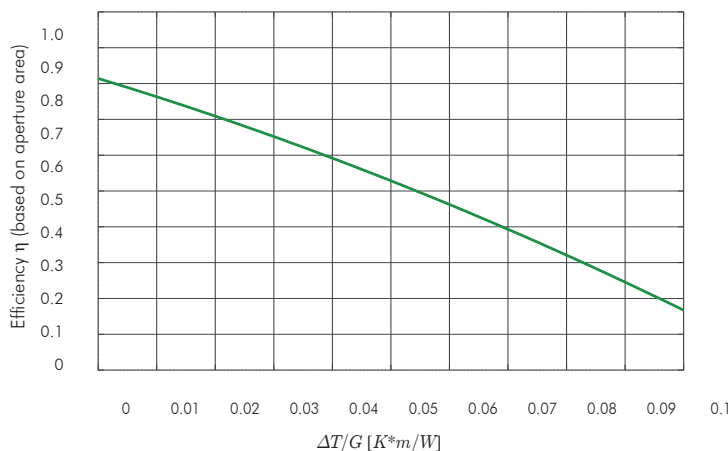
Pressure Loss with Anti-Freeze Liquid:



Gross area:	2.031 m <sup>2</sup>
Absorber area:	1.78 m <sup>2</sup>
Dimensions:	2009 x 1009 x 75 mm
Weight empty:	36.1 kg
Heat transfer fluid volume:	1.57 litres
Energy output:	1444 W
Zero Loss Collector Efficiency $\eta_0$ (A):	0.8117
Absorptance:	0.95
Emittance:	0.13
Heat Loss Coefficient $a_1$ :	3.63
Second Order Heat Loss Coefficient $a_2$ :	0.011
Maximum pressure:	6 bar
Stagnation temperature:	190° C
Recommended flow rate:	60 litres /h
Glass:	4mm Solar safety glass
System arrangement:	Tichelmann
Insulation:	Mineral Wool

## Efficiency curve:

Efficiency curve for the determined coefficients and for an assumed irradiation of 800 W/m<sup>2</sup> (253 Btu/hr ft<sup>2</sup>) based on aperture area:



## Superior solar engineering for zero maintenance

**(Absorber surface)** Anodized with an aluminum oxide selective coating, the absorber surface appears as valleys and canyons when looked at through a microscope. This high tech process maximizes the total surface area, ensuring more light captured and results in much higher performance than mainstream panels. As with everything, you get what you pay for.

**(Heat transfer)** A single copper meandering pipe is folded into the absorber plate for low loss, light-heat conversion ensuring quick transfer of energy to the heat transfer pipe.

**(Glass)** Highly transparent, hailstone-resistant tempered glass, designed specifically for solar panels.

**(Connections)** Our panels feature patented connection clamps for pressure sealed links to adjacent panels and system piping without soldering or welding.

**(Strong as a roof)** A unique clam-shell design allows the panel to expand and contract uniformly without stressing the glass or copper connections resulting in a joint free design giving the panel amongst the longest lifespan of any panel worldwide.

**(Condensation)** The panel allows air to circulate in and out of the panel without heat loss, managing to prevent condensation which many panels fail to do.



**Thermosolar**

Solar Keymark Certification Ref: TSU 010 -12 (Vertical Panel)

**Thermosolar**

Solar Keymark Certification Ref: TSU 010 -12 (Horizontal Panel)



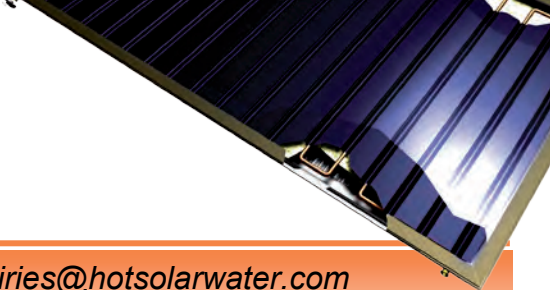
Thermosolar  
Unit 7, 179 Whiteladies Road, Clifton, Bristol. BS8 2AG



Call: 0844 850 8508



Email: [enquiries@hotsolarwater.com](mailto:enquiries@hotsolarwater.com)



# 1 Panel kits

Orientation:	Vertical Solar Panels	Horizontal Solar panels
--------------	--------------------------	----------------------------

Each Kit Includes 1 Pump Station, 1 Digital Controller, 1 Expansion Vessel & 1 Glycol.

On-roof Slate	£2,663.44	£2,775.30
On-roof Tile "Shark Tail" for tiled roofs	£2,663.44	£2,775.30
On-roof Tile "Hook" for large tiles	£2,663.44	£2,775.30
On-roof A-Frame	£2,775.45	£2,763.54
In-roof Slate	£3,056.00	£3,235.04
In-roof Tile	£3,056.00	£3,235.04



Call: 0844 850 8508



Email: [enquiries@hotsolarwater.com](mailto:enquiries@hotsolarwater.com)

# 2 Panel kits

Orientation:	Vertical Solar Panels	Horizontal Solar panels
--------------	--------------------------	----------------------------

Each Kit Includes 1 Pump Station, 1 Digital Controller, 1 Expansion Vessel & 1 Glycol.

On-roof Slate	£3,901.73	£4,328.59
On-roof Tile "Shark Tail" for tiled roofs	£3,901.73	£4,328.59
On-roof Tile "Hook" for large tiles	£3,901.73	£4,328.59
On-roof A-Frame	£3,928.86	£4,300.31
In-roof Slate	£4,421.43	£4,690.34
In-roof Tile	£4,421.43	£4,690.34



Call: 0844 850 8508



Email: [enquiries@hotsolarwater.com](mailto:enquiries@hotsolarwater.com)

# 3 Panel kits

Orientation:

Vertical  
Solar Panels

Horizontal  
Solar panels

Each Kit Includes 1 Pump Station, 1 Digital Controller, 1 Expansion Vessel & 1 Glycol.

On-roof Slate	£5,439.66	£6,001.64
On-roof Tile "Shark Tail" for tiled roofs	£5,439.66	£6,001.64
On-roof Tile "Hook" for large tiles	£5,439.66	£6,001.64
On-roof A-Frame	£5,411.45	£5,967.61
In-roof Slate	£5,962.50	£6,365.45
In-roof Tile	£5,962.50	£6,365.45





Call: 0844 850 8508



Email: [enquiries@hotsolarwater.com](mailto:enquiries@hotsolarwater.com)

# 4 Panel kits

Orientation:	Vertical Solar Panels	Horizontal Solar panels
--------------	--------------------------	----------------------------

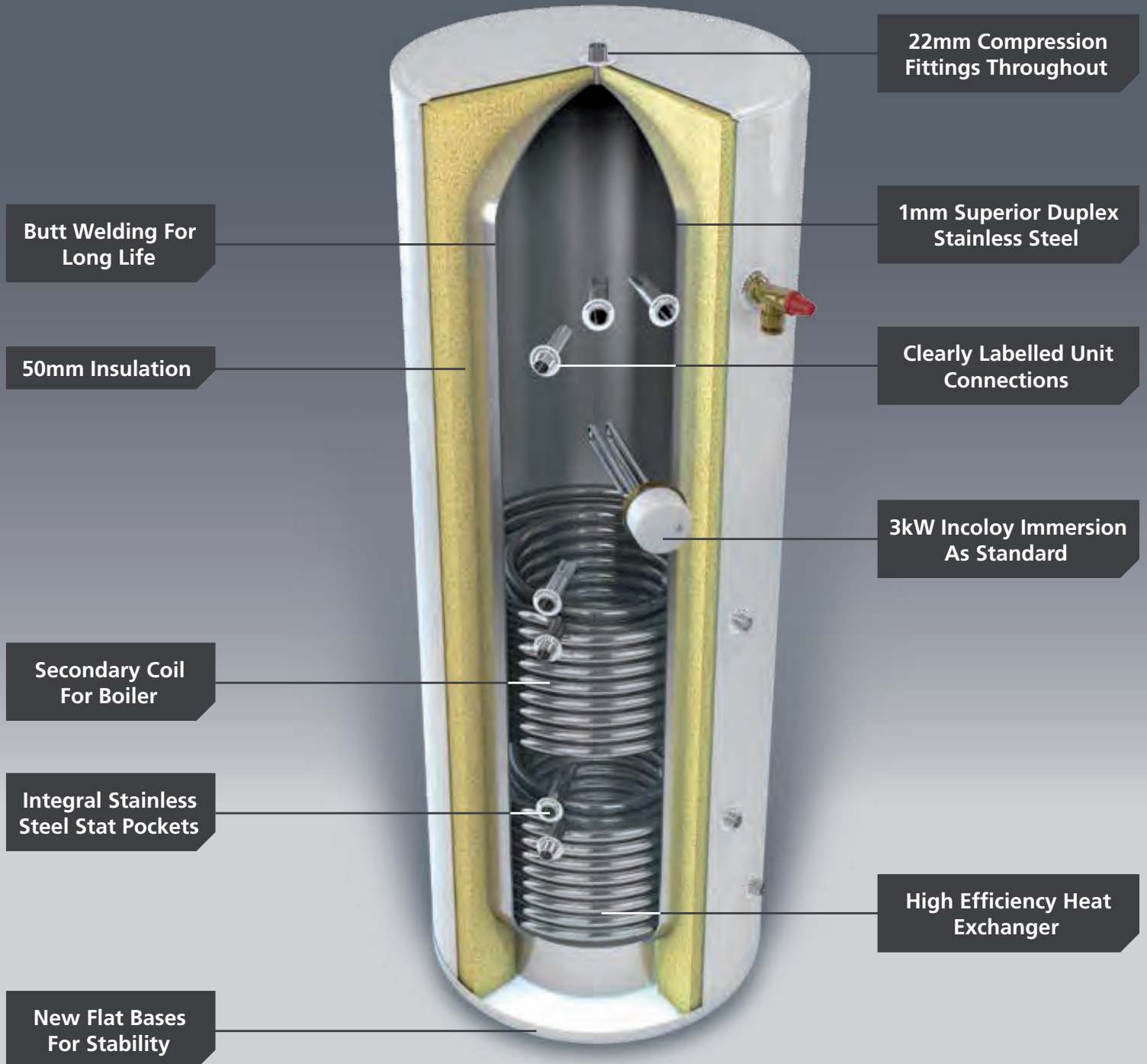
Each Kit Includes 1 Pump Station, 1 Digital Controller, 1 Expansion Vessel & 2 Glycol.

On-roof Slate	£6,706.60	£7,560.28
On-roof Tile "Shark Tail" for tiled roofs	£6,706.60	£7,560.28
On-roof Tile "Hook" for large tiles	£6,706.60	£7,560.28
On-roof A-Frame	£6,760.84	£7,513.23
In-roof Slate	£7,388.98	£7,813.40
In-roof Tile	£7,388.98	£7,813.40



# Twin Coil Cylinder...

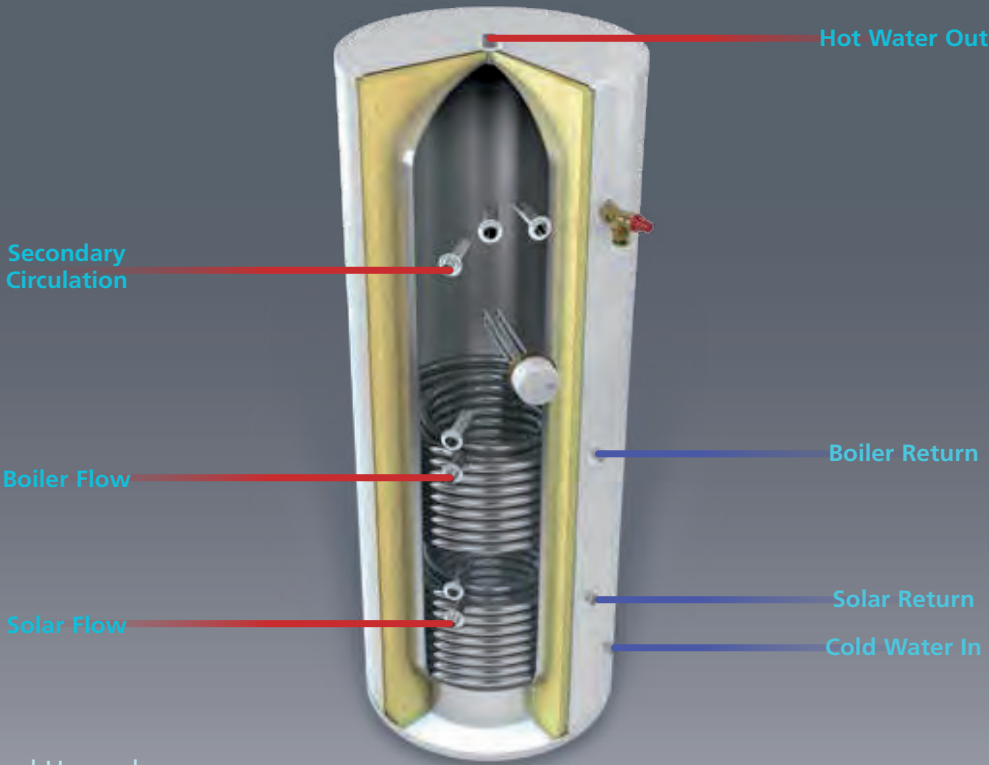
## Gas Boiler & Solar Heated Hot Water Storage



This Twin Coil unit has been developed to give homeowners the opportunity to capitalise on Solar Thermal technologies. In the age of growing fuel bills, this presents a real option to help save homeowners money and reduce their carbon footprint thus safeguarding the future of the planet.

# Piping Schematic Of Generic Twin Coil System...

Secondary Circulation applies to:  
210L, 250L, & 300L units only.



- Optional Upgrades:
- Upgraded Connection Size & Inlet Group
  - Upgrade To Titanium or 6kW Immersions For Commercial Applications

## Technical Specification of the Twin Coil:

Product			150T	180T	210T	250T	300T
Performance Data:	Capacity	-	150L	180L	210L	250L	300L
	Height (mm)	-	1100	1280	1470	1720	1980
	Diameter (mm)	-	545	545	545	545	545
	Weight Empty (kg)	-	34	36	40	46	55
	Weight Full (kg)	-	181	213	247	293	353
	Indirect Reheat (mins)	-	17	20	22	25	34
	Immersion Reheat (mins)	-	57	80	93	113	139
	Heat Exchanger (kW)	-	16.46	18.55	18.55	22	22
	Solar Volume (L)	-	77L	95L	101L	107	121
	Standing Loss (kWh/day)	-	1.41	1.53	1.8	2.15	2.28
Tapping Heights:	Cold Inlet	-	195	195	195	195	195
	Bottom Coil	-	310	310	370	370	370
	Stat Pocket	-	365	365	420	420	420
	Top Coil	-	660	665	780	855	990
	Immersion	-	705	725	835	905	1035
	Stat Pocket	-	765	775	890	970	1095
	Sec. Return	-	-	-	1155	1400	1615
T&P Valve			900	1070	1265	1510	1785

Supplied with  
the following  
components



Cold Water Inlet Set



Tundish



T&P Relief Valve



Expansion Vessel



2 Port Zone Valve



Dual Thermostat



Energy Cut Out Stat



3kW Immersion



Call: 0844 850 8508



Email: [enquiries@hotsolarwater.com](mailto:enquiries@hotsolarwater.com)

# Call today

## For your complete energy solution.

Our sales and technical departments will be happy to answer any questions you may have. We have a library of sales and marketing material that we can send with your order, please ask when you call:



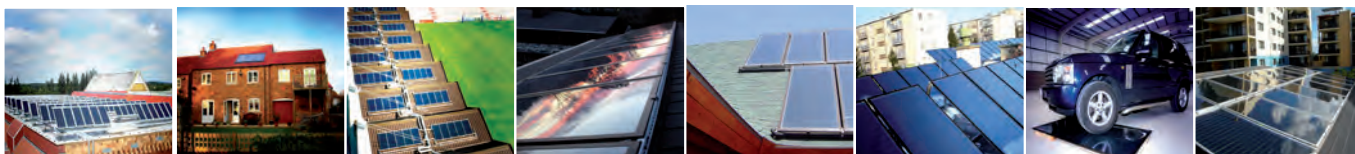
E-Mail: [enquiries@hotsolarwater.com](mailto:enquiries@hotsolarwater.com)

Web: [www.hotsolarwater.com](http://www.hotsolarwater.com)



Tel: +44 (0)844 850 8508

Fax: +44 (0)845 812 2812



Thermosolar Ltd.

Unit 7, 179 Whiteladies Road, Clifton, Bristol. BS8 2AG